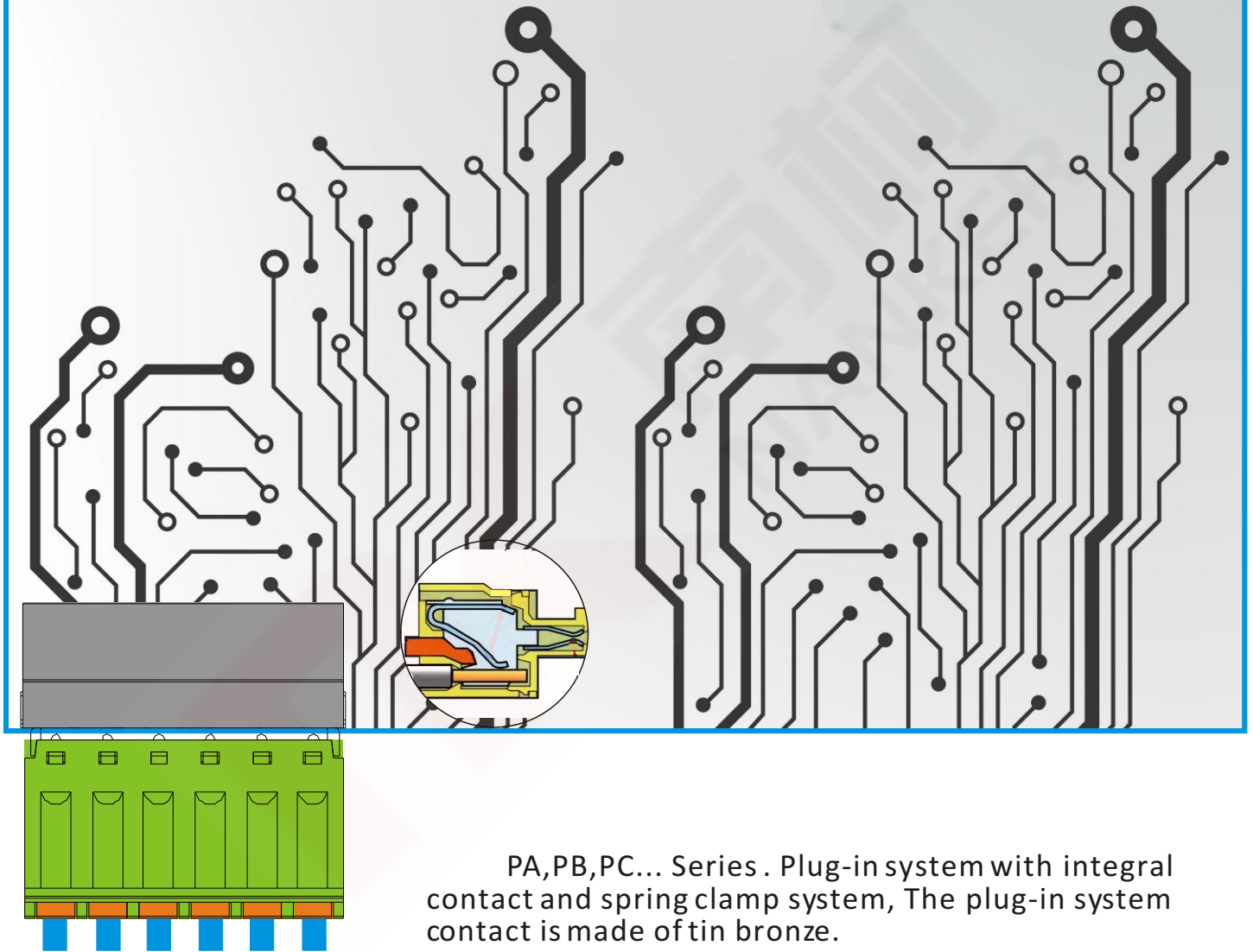


Pluggable

Screwless type plug

Plug-in system terminal block



PA,PB,PC... Series . Plug-in system with integral contact and spring clamp system, The plug-in system contact is made of tin bronze.

These series also provide with mounting type and without mounting one to avoid vibration environment and it is easy to insert the wire by hand. The wire entry way includes horizontal and vertical to meet your design requirements and we are providing 2-24p design.

The series are extremely suitable for industrial control, electric power, automation, security, lighting and other industries

Nomenclature rules

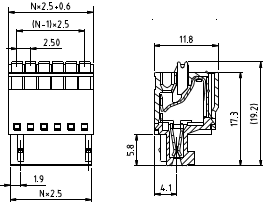
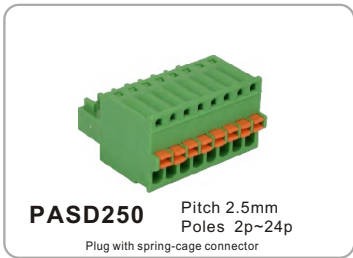
Example:

PA SD 250 xx x xxx
① ② ③ ④ ⑤ ⑥

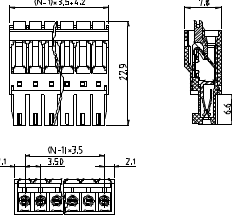
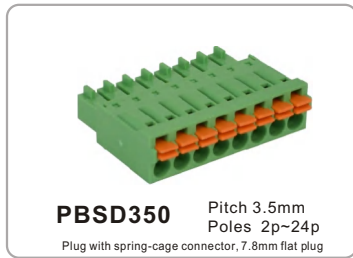
- ① Type
- ② Product style
- ③ Pitch
- ④ Poles
- ⑤ Color
- ⑥ Custom

Color

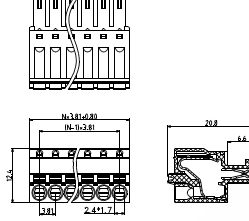
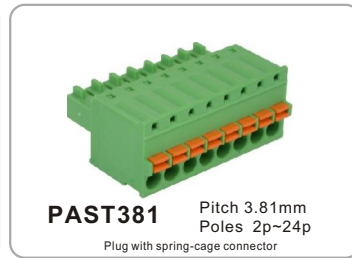
0	Black	5	Green
1	Brown	6	Blue
2	Red	7	Violet
3	Orange	8	Dark grey
4	Yellow	9	White



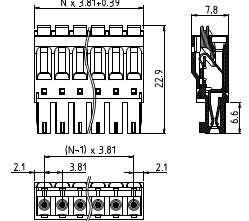
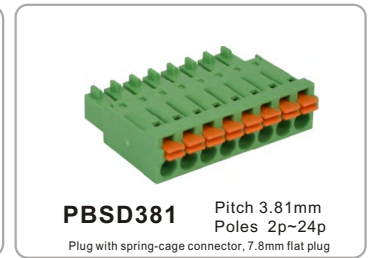
Technical data		Approval		
Technical data(UL/cUL)	Use Group	B	C	D
Nominal voltage (V)	150	-	-	-
Nominal current (A)	4	-	-	-
Connection capacity(AWG)	28-20	-	-	-
Technical data in accordance with IEC				
Rated insulation voltage at pollution degree 2 (V)	160	-	-	-
Rated current/conductor cross-section (A/mm ²)	4/0.5	-	-	-
Solid/stranded(mm ²)	0.14-0.5/0.14-0.5	-	-	-
Surge voltage category/pollution degree	III/3 III/2 II/2	-	-	-
Rated insulation voltage(V)	100 160 320	-	-	-
Rated surge voltage(kV)	1.5 2.5 2.5	-	-	-
General data				
Stripping length(mm)	7-8	-	-	-
Screw flange tightening torque(N.m)	-	-	-	-
Insulation material group	PA 66/I	-	-	-
Inflammability class acc. To UI94	V0	-	-	-



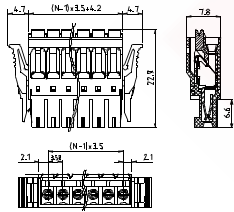
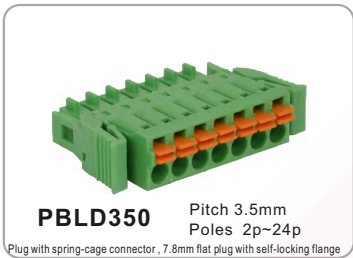
Technical data		Approval		
Technical data(UL/cUL)	Use Group	B	C	D
Nominal voltage (V)	150	-	-	-
Nominal current (A)	8	-	-	-
Connection capacity(AWG)	24-16	-	-	-
Technical data in accordance with IEC				
Rated insulation voltage at pollution degree 2 (V)	160	-	-	-
Rated current/conductor cross-section (A/mm ²)	8/1.5	-	-	-
Solid/stranded(mm ²)	0.2-1.5/0.2-1.5	-	-	-
Surge voltage category/pollution degree	III/3 III/2 II/2	-	-	-
Rated insulation voltage(V)	160 160 320	-	-	-
Rated surge voltage(kV)	2.5 2.5 2.5	-	-	-
General data				
Stripping length(mm)	9-10	-	-	-
Screw flange tightening torque(N.m)	-	-	-	-
Insulation material group	PA 66/I	-	-	-
Inflammability class acc. To UI94	V0	-	-	-



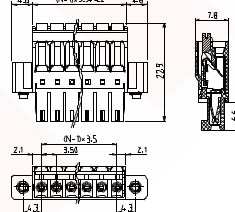
Technical data		Approval		
Technical data(UL/cUL)	Use Group	B	C	D
Nominal voltage (V)	300	-	-	300
Nominal current (A)	8	-	-	8
Connection capacity(AWG)	28-16	-	-	28-16
Technical data in accordance with IEC				
Rated insulation voltage at pollution degree 2 (V)	160	-	-	-
Rated current/conductor cross-section (A/mm ²)	8/1.5	-	-	-
Solid/stranded(mm ²)	0.14-1.5/0.14-1.5	-	-	-
Surge voltage category/pollution degree	III/3 III/2 II/2	-	-	-
Rated insulation voltage(V)	160 160 320	-	-	-
Rated surge voltage(kV)	2.5 2.5 2.5	-	-	-
General data				
Stripping length(mm)	9-10	-	-	-
Screw flange tightening torque(N.m)	-	-	-	-
Insulation material group	PA 66/I	-	-	-
Inflammability class acc. To UI94	V0	-	-	-



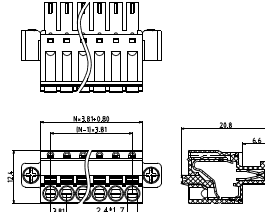
Technical data		Approval		
Technical data(UL/cUL)	Use Group	B	C	D
Nominal voltage (V)	150	-	-	-
Nominal current (A)	8	-	-	-
Connection capacity(AWG)	24-16	-	-	-
Technical data in accordance with IEC				
Rated insulation voltage at pollution degree 2 (V)	160	-	-	-
Rated current/conductor cross-section (A/mm ²)	8/1.5	-	-	-
Solid/stranded(mm ²)	0.2-1.5/0.2-1.5	-	-	-
Surge voltage category/pollution degree	III/3 III/2 II/2	-	-	-
Rated insulation voltage(V)	160 160 320	-	-	-
Rated surge voltage(kV)	2.5 2.5 2.5	-	-	-
General data				
Stripping length(mm)	9-10	-	-	-
Screw flange tightening torque(N.m)	-	-	-	-
Insulation material group	PA 66/I	-	-	-
Inflammability class acc. To UI94	V0	-	-	-



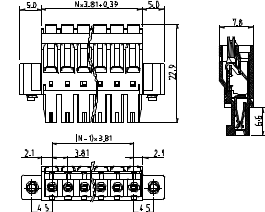
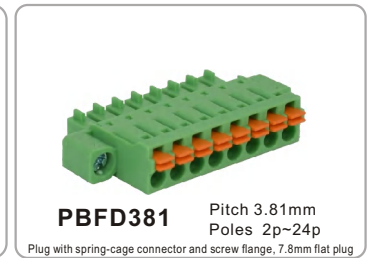
Technical data		Approval		
Technical data(UL/cUL)	Use Group	B	C	D
Nominal voltage (V)	150	-	-	-
Nominal current (A)	8	-	-	-
Connection capacity(AWG)	24-16	-	-	-
Technical data in accordance with IEC				
Rated insulation voltage at pollution degree 2 (V)	160	-	-	-
Rated current/conductor cross-section (A/mm ²)	8/1.5	-	-	-
Solid/stranded(mm ²)	0.2-1.5/0.2-1.5	-	-	-
Surge voltage category/pollution degree	III/3 III/2 II/2	-	-	-
Rated insulation voltage(V)	160 160 320	-	-	-
Rated surge voltage(kV)	2.5 2.5 2.5	-	-	-
General data				
Stripping length(mm)	9-10	-	-	-
Screw flange tightening torque(N.m)	-	-	-	-
Insulation material group	PA 66/I	-	-	-
Inflammability class acc. To UI94	V0	-	-	-



Technical data		Approval		
Technical data(UL/cUL)	Use Group	B	C	D
Nominal voltage (V)	150	-	-	-
Nominal current (A)	8	-	-	-
Connection capacity(AWG)	24-16	-	-	-
Technical data in accordance with IEC				
Rated insulation voltage at pollution degree 2 (V)	160	-	-	-
Rated current/conductor cross-section (A/mm ²)	8/1.5	-	-	-
Solid/stranded(mm ²)	0.2-1.5/0.2-1.5	-	-	-
Surge voltage category/pollution degree	III/3 III/2 II/2	-	-	-
Rated insulation voltage(V)	160 160 320	-	-	-
Rated surge voltage(kV)	2.5 2.5 2.5	-	-	-
General data				
Stripping length(mm)	9-10	-	-	-
Screw flange tightening torque(N.m)	0.3Max.	-	-	-
Insulation material group	PA 66/I	-	-	-
Inflammability class acc. To UI94	V0	-	-	-



Technical data		Approval		
Technical data(UL/cUL)	Use Group	B	C	D
Nominal voltage (V)	300	-	-	300
Nominal current (A)	8	-	-	8
Connection capacity(AWG)	28-16	-	-	28-16
Technical data in accordance with IEC				
Rated insulation voltage at pollution degree 2 (V)	160	-	-	-
Rated current/conductor cross-section (A/mm ²)	8/1.5	-	-	-
Solid/stranded(mm ²)	0.14-1.5/0.14-1.5	-	-	-
Surge voltage category/pollution degree	III/3 III/2 II/2	-	-	-
Rated insulation voltage(V)	160 160 320	-	-	-
Rated surge voltage(kV)	2.5 2.5 2.5	-	-	-
General data				
Stripping length(mm)	9-10	-	-	-
Screw flange tightening torque(N.m)	0.3Max.	-	-	-
Insulation material group	PA 66/I	-	-	-
Inflammability class acc. To UI94	V0	-	-	-

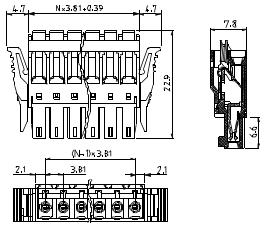


Technical data		Approval		
Technical data(UL/cUL)	Use Group	B	C	D
Nominal voltage (V)	150	-	-	-
Nominal current (A)	8	-	-	-
Connection capacity(AWG)	24-16	-	-	-
Technical data in accordance with IEC				
Rated insulation voltage at pollution degree 2 (V)	160	-	-	-
Rated current/conductor cross-section (A/mm ²)	8/1.5	-	-	-
Solid/stranded(mm ²)	0.2-1.5/0.2-1.5	-	-	-
Surge voltage category/pollution degree	III/3 III/2 II/2	-	-	-
Rated insulation voltage(V)	160 160 320	-	-	-
Rated surge voltage(kV)	2.5 2.5 2.5	-	-	-
General data				
Stripping length(mm)	9-10	-	-	-
Screw flange tightening torque(N.m)	0.3Max.	-	-	-
Insulation material group	PA 66/I	-	-	-
Inflammability class acc. To UI94	V0	-	-	-



PBLD381 Pitch 3.81mm
Poles 2p-24p

Plug with spring-cage connector, 7.8mm flat plug with self-locking flange

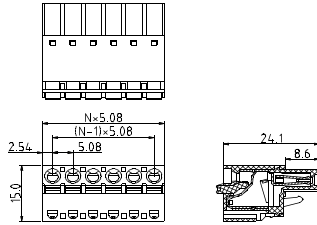


Technical data				
Approval (Pending)				
Technical data(UL/cUL)	Use Group	B	C	D
Nominal voltage (V)	150	-	-	-
Nominal current (A)	8	-	-	-
Connection capacity(AWG)	24-16	-	-	-
Technical data in accordance with IEC				
Rated insulation voltage at pollution degree 2 (V)	160	-	-	-
Rated current/conductor cross-section (A/mm ²)	8/1.5	-	-	-
Solid/stranded(mm ²)	0.2-1.5/0.2-1.5	-	-	-
Surge voltage category/pollution degree	III/3	III/2	II/2	-
Rated insulation voltage(V)	160	160	320	-
Rated surge voltage(kV)	2.5	2.5	2.5	-
General data				
Stripping length(mm)	9-10	-	-	-
Screw flange tightening torque(N.m)	-	-	-	-
Insulation material group	PA 66/I	-	-	-
Inflammability class acc. To UI94	V0	-	-	-



PASD508 Pitch 5.08mm
Poles 2p-24p

Plug with spring-cage connector, point down type

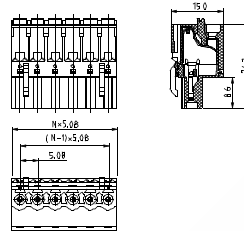


Technical data				
Approval (Pending)				
Technical data(UL/cUL)	Use Group	B	C	D
Nominal voltage (V)	300	-	300	-
Nominal current (A)	10	-	10	-
Connection capacity(AWG)	26-12	-	26-12	-
Technical data in accordance with IEC				
Rated insulation voltage at pollution degree 2 (V)	320	-	-	-
Rated current/conductor cross-section (A/mm ²)	12/2.5	-	-	-
Solid/stranded(mm ²)	0.2-2.5/0.2-2.5	-	-	-
Surge voltage category/pollution degree	III/3	III/2	II/2	-
Rated insulation voltage(V)	250	320	630	-
Rated surge voltage(kV)	4	4	4	-
General data				
Stripping length(mm)	8-9	-	-	-
Screw flange tightening torque(N.m)	-	-	-	-
Insulation material group	PA 66/I	-	-	-
Inflammability class acc. To UI94	V0	-	-	-



PAST508 Pitch 5.08mm
Poles 2p-24p

Plug with spring-cage connector, point up type

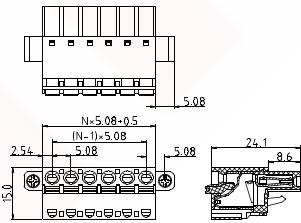


Technical data				
Approval (Pending)				
Technical data(UL/cUL)	Use Group	B	C	D
Nominal voltage (V)	300	-	300	-
Nominal current (A)	10	-	10	-
Connection capacity(AWG)	26-12	-	26-12	-
Technical data in accordance with IEC				
Rated insulation voltage at pollution degree 2 (V)	320	-	-	-
Rated current/conductor cross-section (A/mm ²)	12/2.5	-	-	-
Solid/stranded(mm ²)	0.2-2.5/0.2-2.5	-	-	-
Surge voltage category/pollution degree	III/3	III/2	II/2	-
Rated insulation voltage(V)	250	320	630	-
Rated surge voltage(kV)	4	4	4	-
General data				
Stripping length(mm)	8-9	-	-	-
Screw flange tightening torque(N.m)	-	-	-	-
Insulation material group	PA 66/I	-	-	-
Inflammability class acc. To UI94	V0	-	-	-



PAFD508 Pitch 5.08mm
Poles 2p-24p

Plug with spring-cage connector and screw flange, point down type

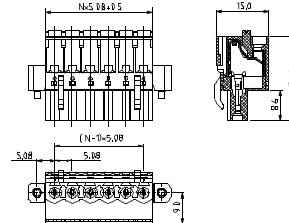


Technical data				
Approval (Pending)				
Technical data(UL/cUL)	Use Group	B	C	D
Nominal voltage (V)	300	-	300	-
Nominal current (A)	10	-	10	-
Connection capacity(AWG)	26-12	-	26-12	-
Technical data in accordance with IEC				
Rated insulation voltage at pollution degree 2 (V)	320	-	-	-
Rated current/conductor cross-section (A/mm ²)	12/2.5	-	-	-
Solid/stranded(mm ²)	0.2-2.5/0.2-2.5	-	-	-
Surge voltage category/pollution degree	III/3	III/2	II/2	-
Rated insulation voltage(V)	250	320	630	-
Rated surge voltage(kV)	4	4	4	-
General data				
Stripping length(mm)	8-9	-	-	-
Screw flange tightening torque(N.m)	0.3Max.	-	-	-
Insulation material group	PA 66/I	-	-	-
Inflammability class acc. To UI94	V0	-	-	-



PAFT508 Pitch 5.08mm
Poles 2p-24p

Plug with spring-cage connector and screw flange, point up type



Technical data				
Approval (Pending)				
Technical data(UL/cUL)	Use Group	B	C	D
Nominal voltage (V)	300	-	300	-
Nominal current (A)	10	-	10	-
Connection capacity(AWG)	26-12	-	26-12	-
Technical data in accordance with IEC				
Rated insulation voltage at pollution degree 2 (V)	320	-	-	-
Rated current/conductor cross-section (A/mm ²)	12/2.5	-	-	-
Solid/stranded(mm ²)	0.2-2.5/0.2-2.5	-	-	-
Surge voltage category/pollution degree	III/3	III/2	II/2	-
Rated insulation voltage(V)	250	320	630	-
Rated surge voltage(kV)	4	4	4	-
General data				
Stripping length(mm)	8-9	-	-	-
Screw flange tightening torque(N.m)	0.3Max.	-	-	-
Insulation material group	PA 66/I	-	-	-
Inflammability class acc. To UI94	V0	-	-	-